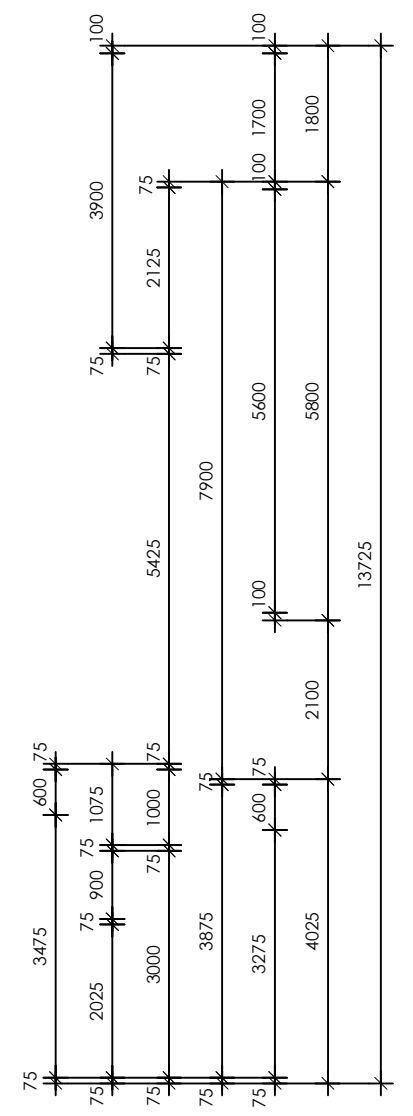
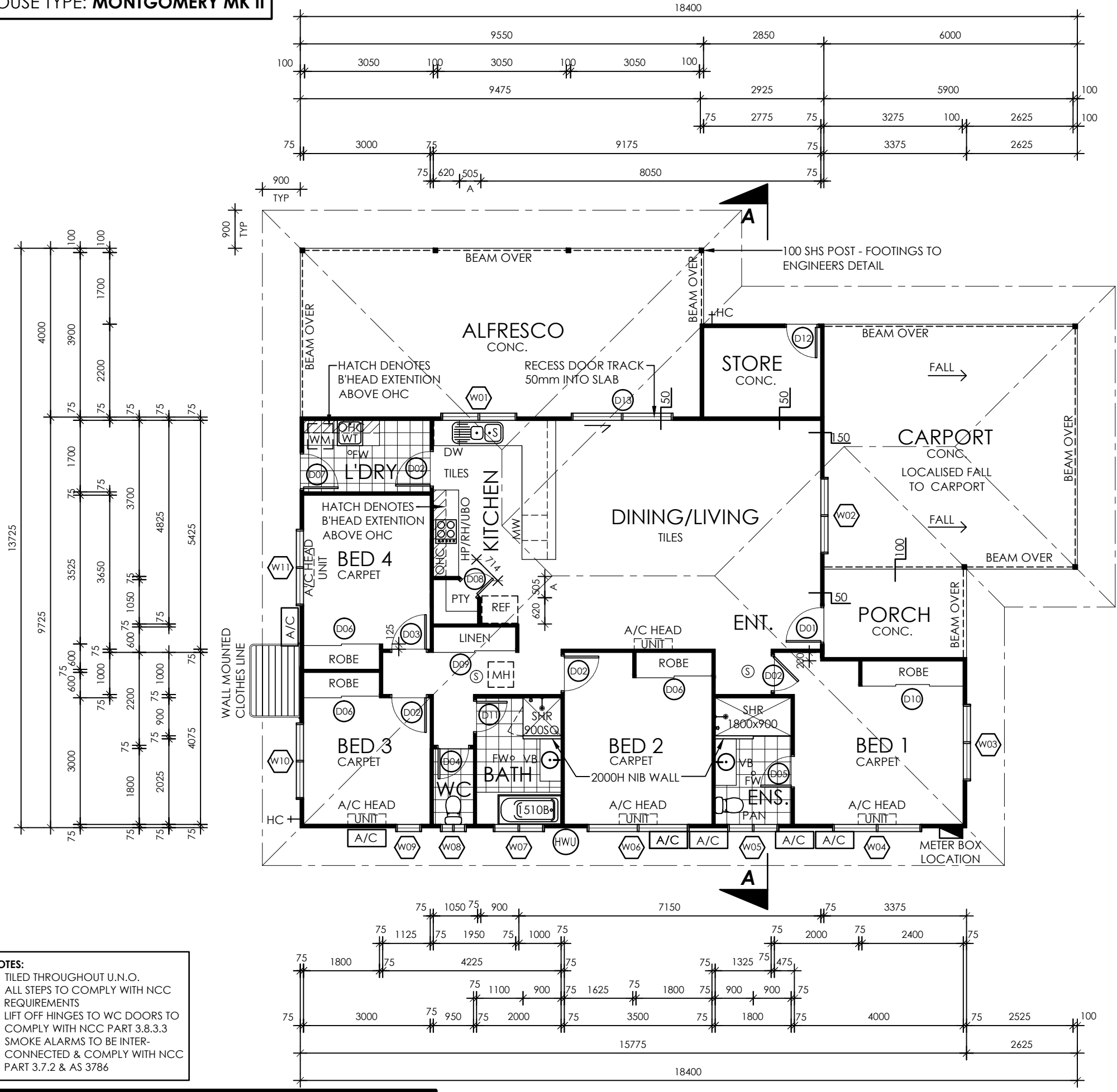


ELEVATION KEY



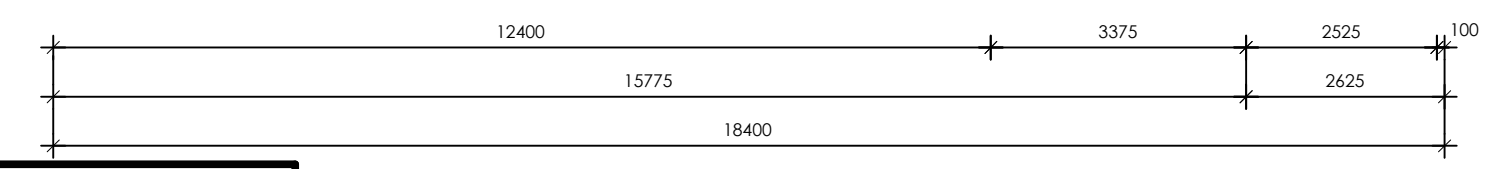
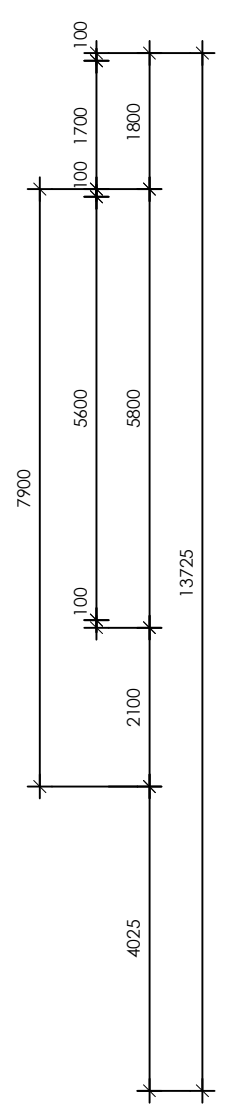
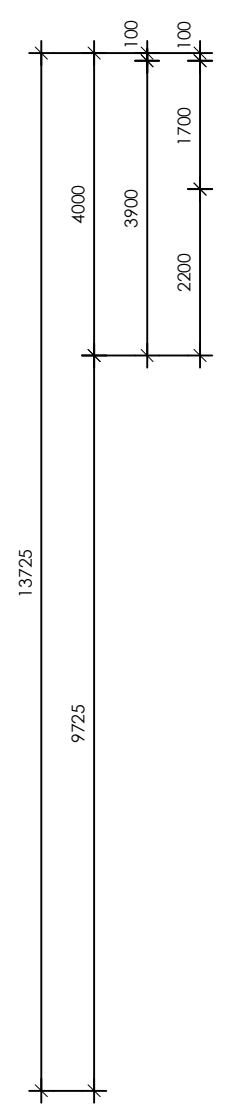
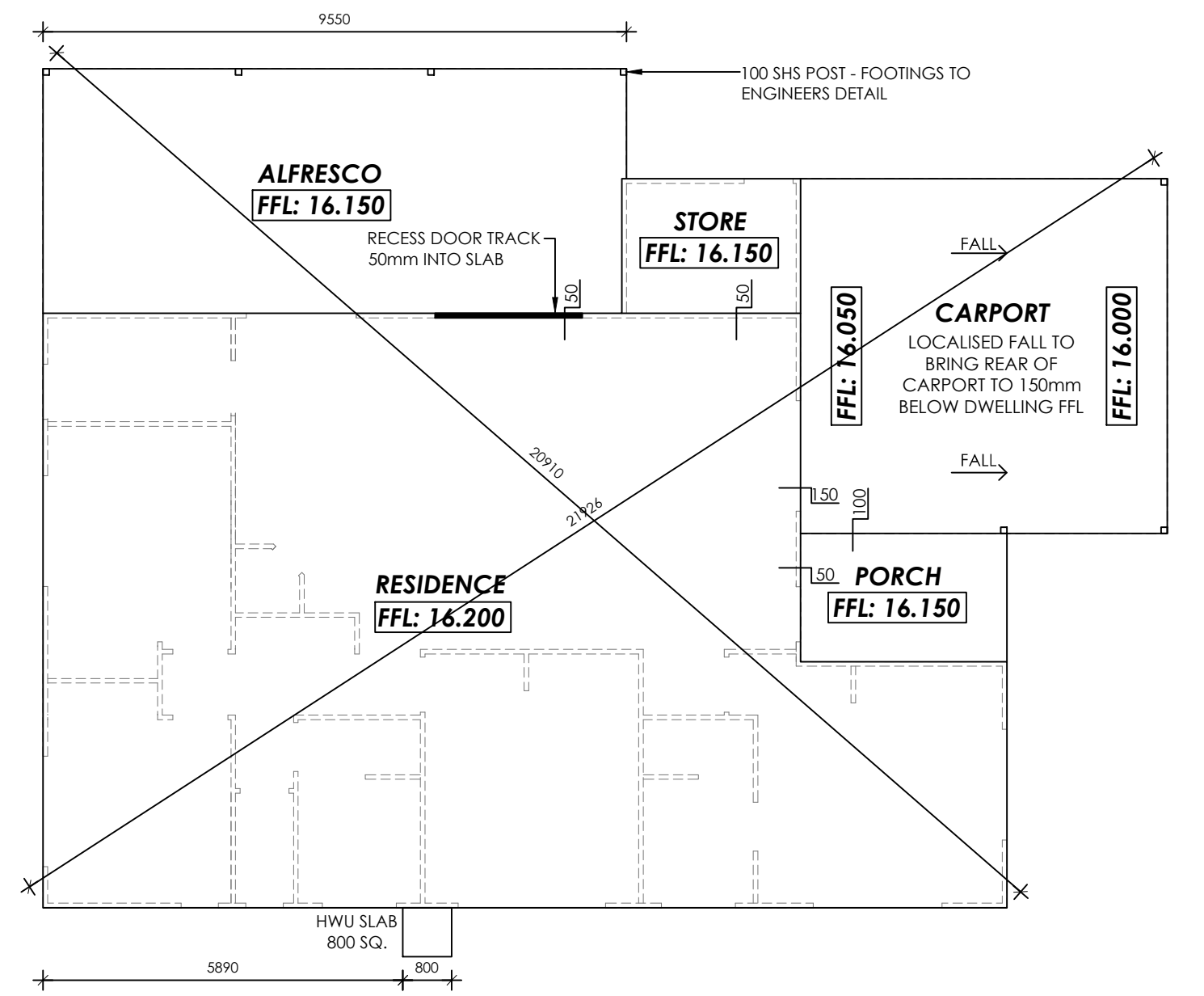
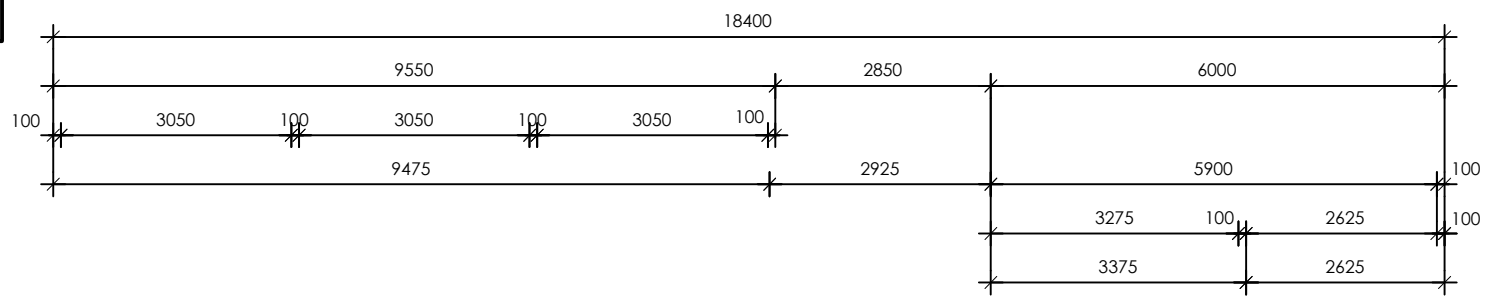
- NOTES:**
1. TILED THROUGHOUT U.N.O.
 2. ALL STEPS TO COMPLY WITH NCC REQUIREMENTS
 3. LIFT OFF HINGES TO WC DOORS TO COMPLY WITH NCC PART 3.8.3.3
 4. SMOKE ALARMS TO BE INTER-CONNECTED & COMPLY WITH NCC PART 3.7.2 & AS 3786

AREAS:

LIVING:	134.17sqm
CARPORY:	34.80sqm
ALFRESCO:	38.04sqm
STORE:	6.44sqm
PORCH:	7.09sqm
TOTAL AREA:	220.54sqm

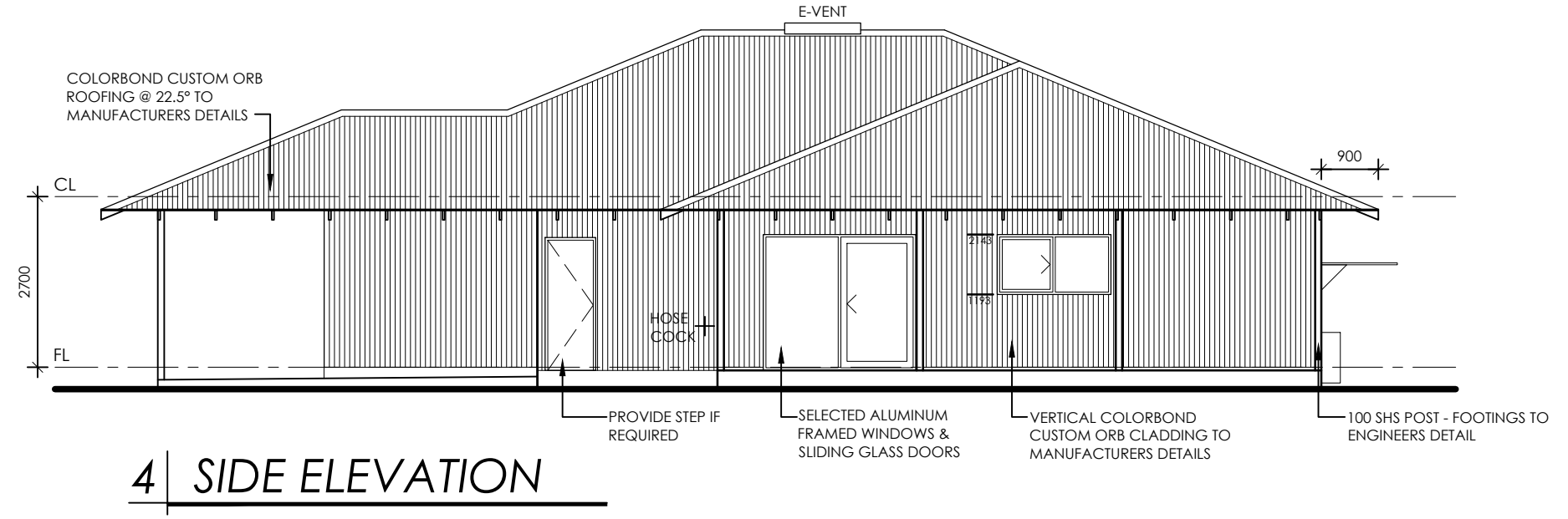
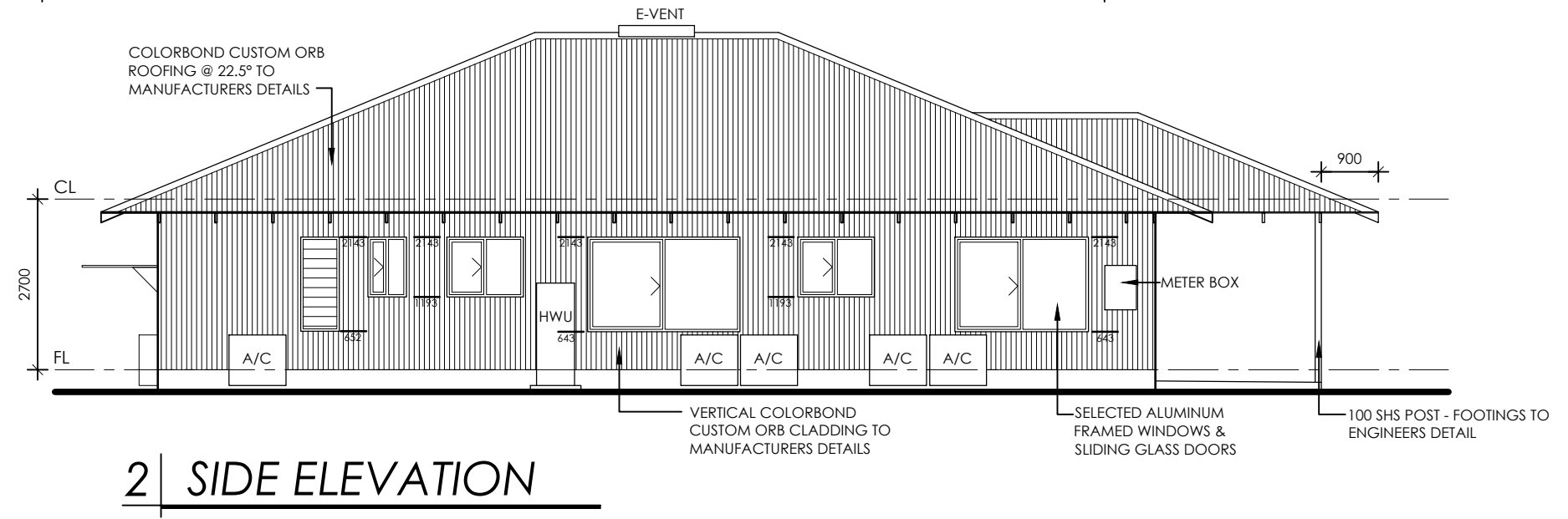
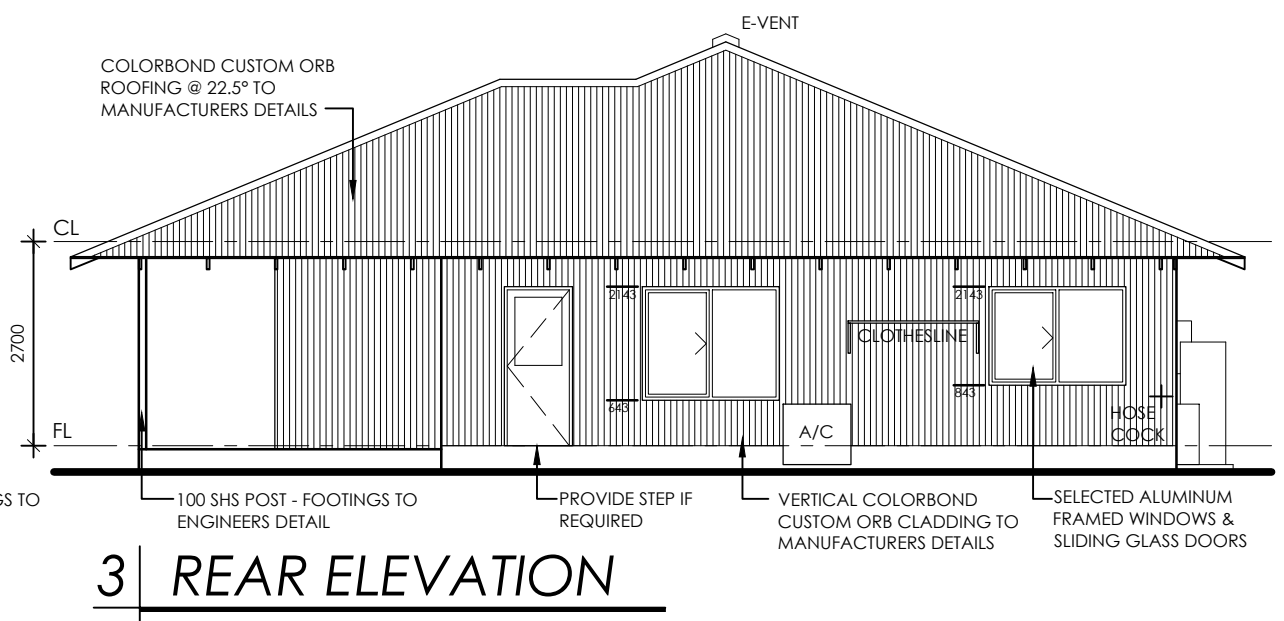
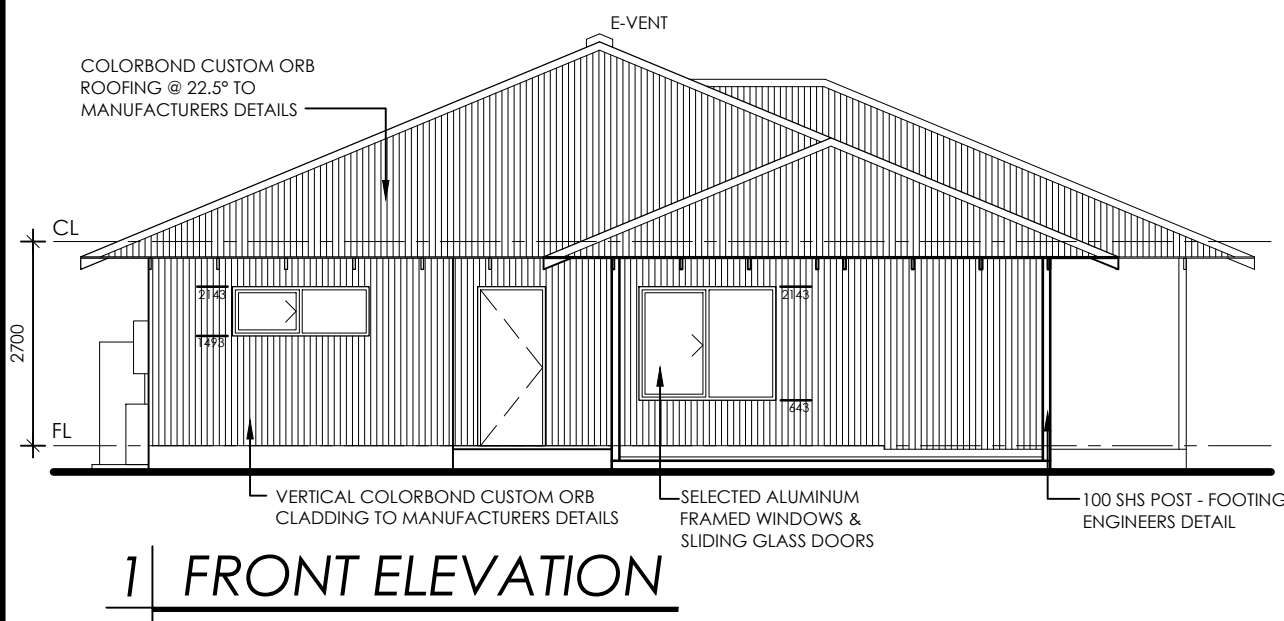
FLOOR PLAN

SCALE
1:100



SLAB PLAN

SCALE
 1:100



ELECTRICAL LEGEND

2	⊙	SMOKE ALARM TO B.C.A REQ.	-	⊕	ROUND FLUORESCENT LIGHT	2	⊕	EXTERNAL LIGHT	-	⊗	IXL TASTIC - FAN/LIGHT/HEATER
23	⊕	LOW VOLTAGE DOWNLIGHT	-	⊕	WALL MOUNTED LIGHT	3	—	FLUORESCENT LIGHT	3	⊗	EXHAUST FAN
6	▲	SINGLE POWER POINT	17	▲▲	DOUBLE POWER POINT	-	⬆	SINGLE WATERPROOF POWER POINT	3	⬆	DOUBLE WATERPROOF POWER POINT
1	⊕	T.V. POINT	1	⊕	PHONE POINT	8	⊗	CEILING FAN	1	▭	METER BOX
1	⊕	HOT WATER UNIT	-	⊕	GAS HOT WATER UNIT (STORAGE)	-	⊕	GAS HOT WATER UNIT (INSTANTANEOUS)	6	A/C	AIR CONDITIONING UNIT

NOTE:
 ELECTRICAL FITTINGS IN WET AREAS
 IN ACCORDANCE WITH AS3000

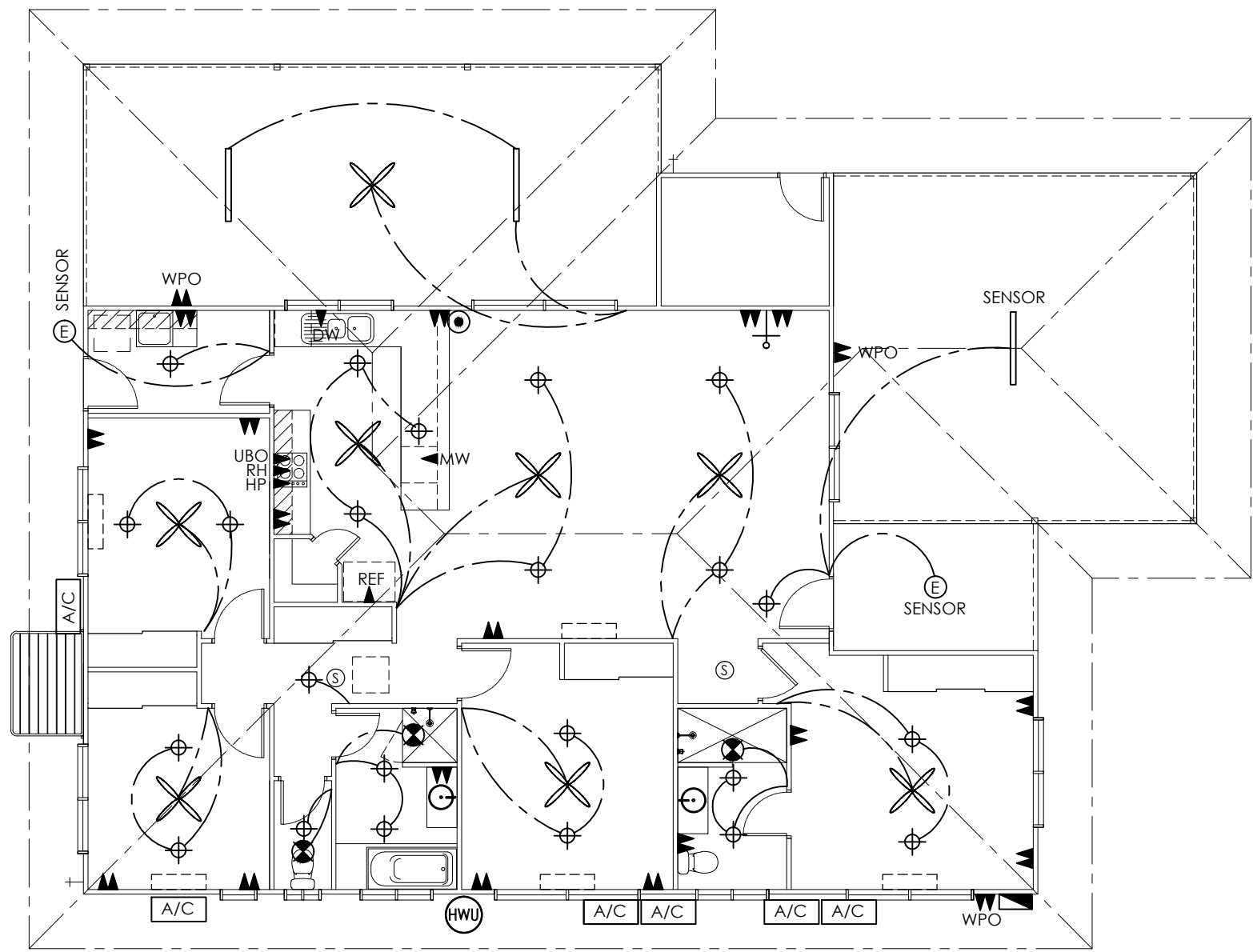
LOCATION OF AC HEAD UNIT TO
 MANUFACTURERS SPECIFICATION

UNVENTED LOW VOLTAGE COMPACT
 FLUORESCENT DOWNLIGHTS THROUGHOUT
 REFERS BUILDERS SPEC

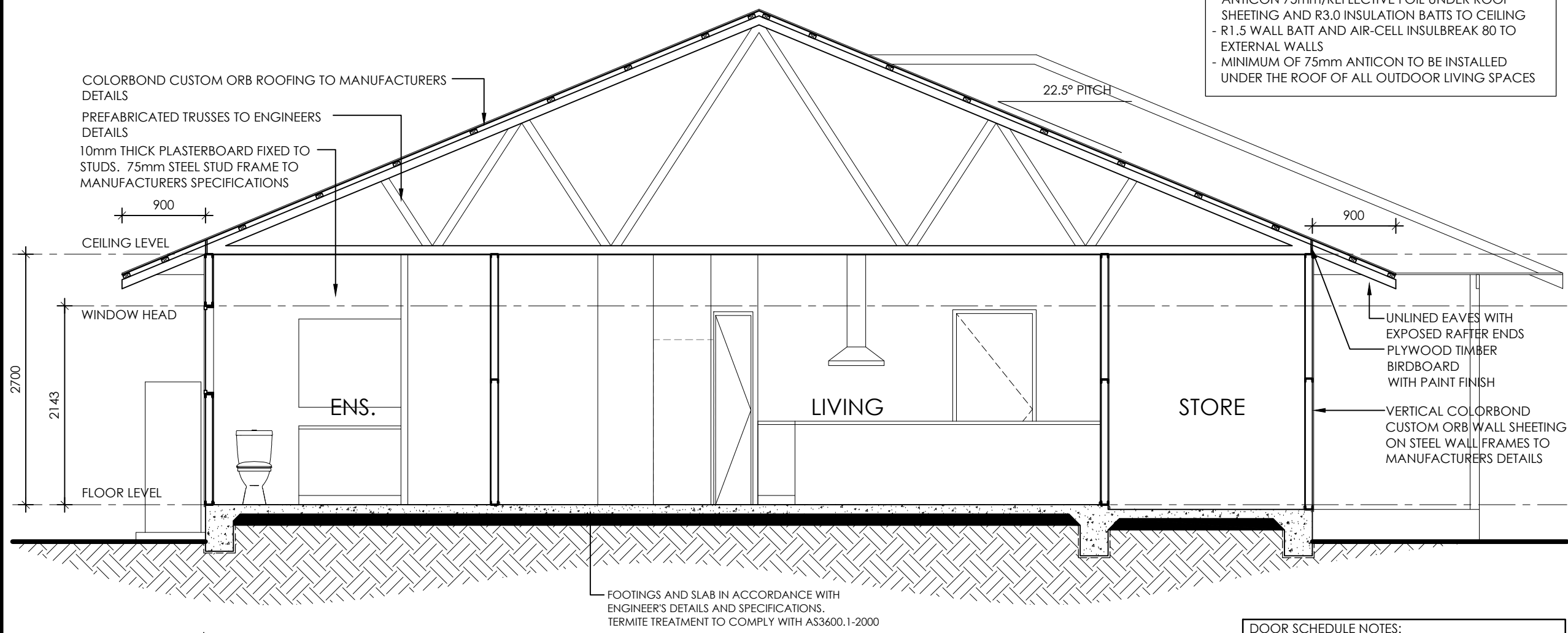
SMOKE ALARMS TO COMPLY TO BCA PART
 3.7.2 & AS 3786

**LAUNDRY GPO ABOVE
 BENCH TO BE
 MOVED OVER AWAY
 FROM TROUGH**

**GPO ALSO REQUIRED
 FOR WASHING
 MACHINE**



INSULATION NOTES:
 - R4.76 PLUS INSULATION TO ROOF AND CEILING WITH ANTICON 75mm/REFLECTIVE FOIL UNDER ROOF SHEETING AND R3.0 INSULATION BATTS TO CEILING
 - R1.5 WALL BATT AND AIR-CELL INSULBREAK 80 TO EXTERNAL WALLS
 - MINIMUM OF 75mm ANTICON TO BE INSTALLED UNDER THE ROOF OF ALL OUTDOOR LIVING SPACES



SECTION A-A

FOOTINGS AND SLAB IN ACCORDANCE WITH ENGINEER'S DETAILS AND SPECIFICATIONS.
 TERMITE TREATMENT TO COMPLY WITH AS3600.1-2000

DOOR SCHEDULE NOTES:
 -PROVIDE DOOR STOPS WHERE REQUIRED REFER TO FLOOR PLAN FOR SWING
 -DOOR HEIGHTS TYPICALLY 2040
 -HINGE SIDE BASED ON DOORS OPENING INWARD INTO ROOMS, VIEWED FROM INSIDE OF ROOM

WINDOW SCHEDULE

NO.	WINDOW TYPE	HEIGHT	WIDTH	LOCATION	COMMENTS
D13	STANDARD SLIDING DOOR	2193	2400	DINING	RECESS DOOR TRACK 50mm INTO SLAB
W01	STANDARD SLIDING	950	1800	KITCHEN	
W02	STANDARD SLIDING	1500	1800	LIVING	
W03	STANDARD SLIDING	650	1800	BED 1	
W04	STANDARD SLIDING	1500	2100	BED 1	
W05	STANDARD SLIDING	950	1200	ENS.	OBSCURE GLASS
W06	STANDARD SLIDING	1500	2400	BED 2	
W07	STANDARD SLIDING	950	1200	BATH	OBSCURE GLASS
W08	STANDARD SLIDING	950	600	WC	OBSCURE GLASS
W09	GLASS LOUVRE	1491	600	BED 3	
W10	STANDARD SLIDING	1300	1800	BED 3	
W11	STANDARD SLIDING	1500	1800	BED 4	

DOOR SCHEDULE

DOOR	HINGE SIDE	OPENING SIZE	DOOR TYPE	FRAME	FURNITURE	DOOR STOP	LOCATION	
D01	RIGHT	820	CORINTHIAN FEATURE DOOR	CORINTHIAN ENVIROSEAL	GAINSBOROUGH TRILOCK	Y	ENTRY	
D02	RIGHT	820	CORINTHIAN STANFORD (STA)	METAL KNOCK DOWN	PASSAGE SET	Y	BED 1, 2 & 3, L'DRY	
D03	LEFT	820	CORINTHIAN STANFORD (STA)	METAL KNOCK DOWN	PASSAGE SET	Y	BED 4	
D04	LEFT	720	CORINTHIAN STANFORD (STA)	METAL KNOCK DOWN	PRIVACY SET	Y	WC	
D05	RIGHT	720	CORINTHIAN STANFORD (STA)	METAL KNOCK DOWN	PASSAGE SET	Y	ENS	
D06	N/A	SITE MEASURE	SLIDING ROBE DOORS	SUPPLIED WITH ROBE DOORS	N/A	N	ROBE BED 2, 3, 4	
D07	LEFT	820	SOLID CORE FLUSH PANEL W/ INSET GLASS PANEL	CORINTHIAN ENVIROSEAL	PASSAGE SET W/ SINGLE DEADBOLT	Y	L'DRY	
D08	LEFT	520	CORINTHIAN STANFORD (STA)	METAL KNOCK DOWN	DUMMY SET	CATCH/LATCH & STOP	PANTRY	
D09	N/A	SITE MEASURE	SLIDING ROBE DOORS	SUPPLIED WITH ROBE DOORS	N/A	N	LINEN	
D10	N/A	SITE MEASURE	SLIDING ROBE DOORS	SUPPLIED WITH ROBE DOORS	N/A	N	ROBE BED 1	
D11	RIGHT	720	CORINTHIAN STANFORD (STA)	METAL KNOCK DOWN	PRIVACY SET	Y	BATH	
D12	RIGHT	820	SOLID CORE FLUSH PANEL	CORINTHIAN ENVIROSEAL	PASSAGE SET W/ SINGLE DEADBOLT	Y	STORE	
D13			R E F E R W I N D O W S C H E D U L E					

AMPLIMESH GRILLE SECURITY SCREENS TO ALL EXTERNAL DOORS (EXCEPT STORE ROOM)