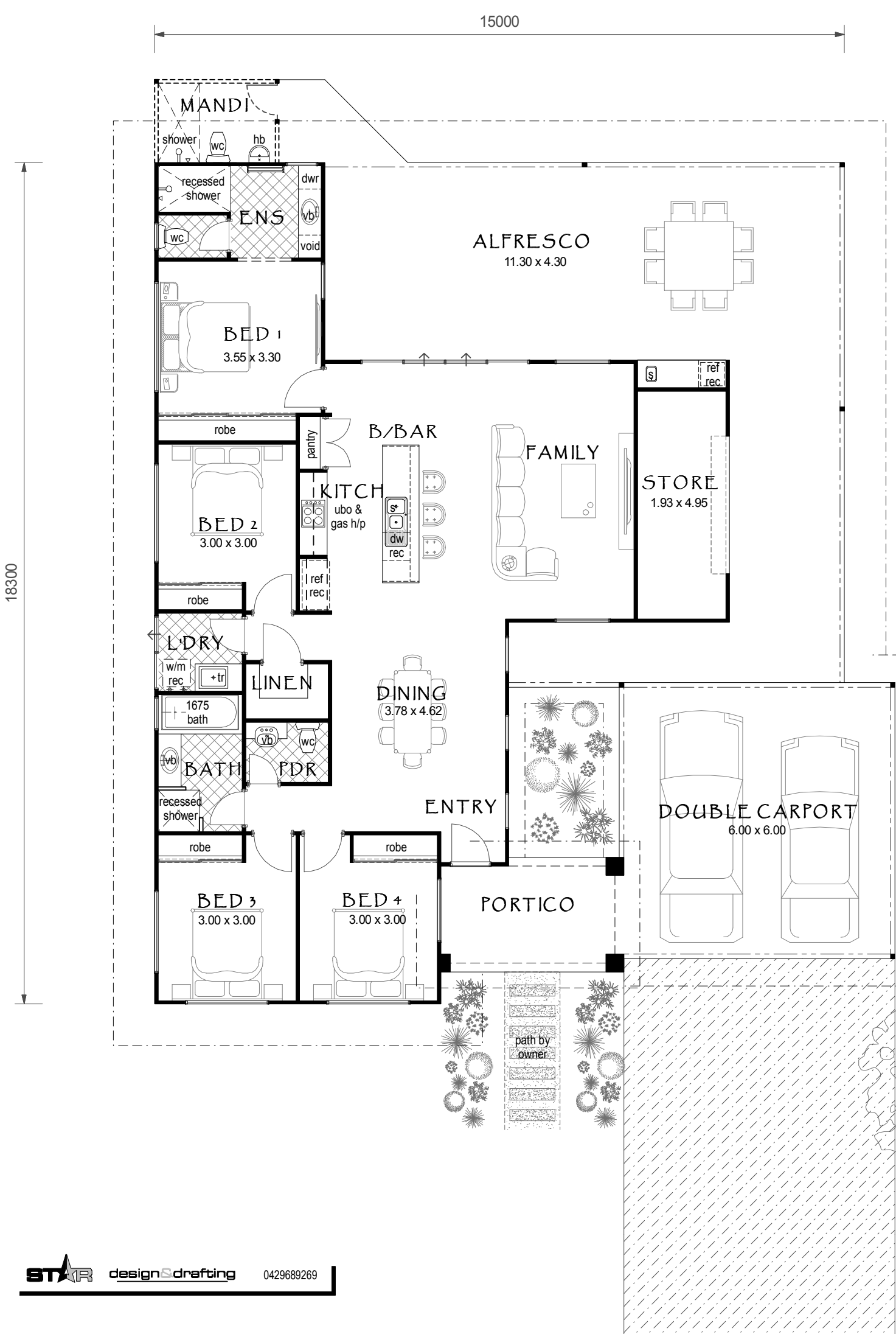


"the Berkley"

4 bed, 3x bath

by Connolly Homes



HOUSE 146.645m²
 (61.600m)
 PORTICO 9.618m²
 CARPORT 35.780m²
 VERANDAH 72.643m²
 Mandi 4.860m²
TOTAL AREA 269.546m²

ROOF 326.987m² (85.000m)

\$397 600.00 inc GST



M : 0439 094 459